

- Ultra High Performance tire designed for luxury sport-sedans
- Solid center rib with siping designed for high-speed stability and extra traction
- Continuous outer shoulder design enhances cornering stability
- Four wide circumferential grooves provide excellent hydroplaning resistance and wet traction
- Jointless spiral-wrapped full nylon cap ply for added strength and durability
- Innovative tread compound promotes outstanding wet and dry traction
- UTQG 240 AA A



Part #	Tire Size	Service Description / Ply Rating	Side wall	Overall Diameter (in)	Section Width (in)	Rim Width (in)	Tread Depth (in)	Max Load (lbs)	Max PSI
TP23852900	195/55R15	85V	BSW	23.5	7.8	6.0	10/32	1135	44
TP38018600	195/60R15	88V	BSW	24.2	7.9	6.0	10/32	1235	44
TP23970900	195/65R15	91V	BSW	24.9	7.8	6.0	10/32	1356	44
TP38057300	205/60R15	91V	BSW	24.7	8.1	6.0	10/32	1356	44
TP15776500	205/65R15	94V	BSW	25.5	8.2	6.0	10/32	1477	44
TP00137400	205/55ZR16	94W XL	BSW	25.0	8.2	6.5	10/32	1477	50
TP39720200	215/55R16	97W XL	BSW	25.3	8.9	7.0	10/32	1609	50
TP40906900	215/60ZR16	99W	BSW	26.2	8.5	6.5	10/32	1709	44
TP00053200	225/55ZR16	99W XL	BSW	25.7	9.1	7.0	10/32	1709	50
TP42395600	205/50R17	89V	BSW	25.3	8.3	6.5	10/32	1279	50
TP42395100	205/50ZR17	93W XL	BSW	25.3	8.3	6.5	10/32	1433	50
TP41990300	215/45R17	87V	BSW	24.7	8.4	7.0	10/32	1201	50
TP41990900	215/45ZR17	91W XL	BSW	24.7	8.4	7.0	10/32	1356	50
TP42398700	215/50ZR17	95W XL	BSW	25.6	8.7	7.0	10/32	1521	50
TP00359200	215/55R17	98W XL	BSW	26.4	8.9	7.0	10/32	1653	50
TP25715900	225/65R17	102V	BSW	28.5	8.8	6.5	10/32	1874	44
TP00121200	225/40ZR18	92W XL	BSW	25.1	9.1	8.0	10/32	1389	50
TP43136000	225/45ZR18	91W	BSW	25.9	8.8	7.5	10/32	1356	50
TP43139000	225/45ZR18	95W XL	BSW	25.9	8.8	7.5	10/32	1521	50
TP43030200	235/60ZR18	107W	BSW	29.1	9.5	7.0	10/32	2149	44
TP43105200	245/40ZR18	97W XL	BSW	25.7	9.8	8.5	10/32	1609	50
TP43108200	245/50ZR18	104W XL	BSW	27.6	9.8	7.5	10/32	1984	50
TP43118300	255/55ZR18	109W XL	BSW	29.1	10.2	8.0	10/32	2270	50
TP00066200	245/45ZR19	102W	BSW	27.7	9.5	8.0	10/32	1874	50



- Ultra High Performance tire designed for luxury sport-sedans
- Asymmetrical non-directional tread pattern allows cross-rotation to maintain noise performance throughout the life of the tire
- Semi-continuous inner ribs offer extra stability during braking and acceleration
- Four wide circumferential grooves improve hydroplaning resistance
- Computer-optimized tread block arrangement and pitch sequence offer a quiet and refined ride
- Jointless spiral-wound cap ply maximizes ride refinement and durability
- Innovative silica tread compound promotes outstanding wet and dry traction
- UTQG 280 AA A for 55 and lower series
- UTQG 280 A A for 60 and higher series

Part #	Tire Size	Service Description / Ply Rating	Side wall	Overall Diameter (in)	Section Width (in)	Rim Width (in)	Tread Depth (in)	Max Load (lbs)	Max PSI
TP23839000	195/45ZR15	78W	BSW	21.9	7.8	6.5	10/32	937	44
TP38028000	195/50R15	86V XL	BSW	22.7	7.7	6.0	10/32	1168	50
TP23842100	195/50R15	82V	BSW	22.7	7.7	6.0	10/32	1477	50
TP23852400	195/55R15	85V	BSW	23.4	7.9	6.0	10/32	1135	44
TP38016000	195/60R15	88V	BSW	24.4	7.8	6.0	10/32	1235	44
TP23983000	195/65R15	95V XL	BSW	25.1	8.0	6.0	10/32	1521	50
TP38055600	205/60R15	91V	BSW	24.8	8.1	6.0	10/32	1356	44
TP15768800	205/65R15	95V	BSW	25.6	8.1	6.0	10/32	1521	44
TP39608000	195/50R16	88V XL	BSW	23.7	7.8	6.0	10/32	1235	50
TP39609100	195/55R16	91V XL	BSW	24.4	7.8	6.0	11/32	1356	50
TP39586300	205/45ZR16	87W XL	BSW	23.2	8.3	7.0	10/32	1201	50
TP39651000	205/50ZR16	91W XL	BSW	24.1	8.3	6.5	10/32	1356	50
TP39701800	205/55ZR16	94W XL	BSW	24.9	8.3	6.5	10/32	1477	50
TP39720000	215/55ZR16	97W XL	BSW	25.1	8.9	7.0	10/32	1609	50
TP00052000	225/50ZR16	96W XL	BSW	24.8	9.1	7.0	10/32	1565	50
TP00053100	225/55ZR16	99W XL	BSW	25.6	9.2	7.0	10/32	1709	50
TP00112100	205/40ZR17	84Y XL	BSW	23.5	8.3	7.5	10/32	1102	50
TP00112200	205/40ZR17	84W XL	BSW	23.6	8.6	7.5	10/32	1102	50
TP39587700	205/45ZR17	88W XL	BSW	24.3	8.3	7.0	10/32	1235	50
TP42398500	205/50ZR17	93W XL	BSW	25.2	8.3	6.5	10/32	1433	50
TP42505800	215/40ZR17	87W XL	BSW	23.9	8.7	7.5	10/32	1201	50
TP41991000	215/45ZR17	91W XL	BSW	24.7	8.3	7.0	11/32	1356	50
TP41991200	215/45ZR17	91Y XL	BSW	24.7	8.4	7.0	11/32	1356	50
TP42398600	215/50ZR17	95W XL	BSW	25.5	8.8	7.0	10/32	1521	50
TP41991800	225/45ZR17	94W XL	BSW	25.0	8.9	7.5	10/32	1477	50
TP41991600	225/45ZR17	94Y XL	BSW	25.0	8.9	7.5	10/32	1477	50
TP41993000	225/50ZR17	98W XL	BSW	25.8	9.1	7.0	11/32	1653	50
TP41993200	225/50ZR17	98Y XL	BSW	25.8	9.1	7.0	11/32	1653	50
TP42431000	225/55ZR17	101W XL	BSW	26.7	9.3	7.0	10/32	1819	50
TP41993800	235/45ZR17	97W XL	BSW	25.3	9.3	8.0	10/32	1609	50
TP41993600	235/45ZR17	97Y XL	BSW	25.3	9.3	8.0	10/32	1609	50
TP42102800	245/40ZR17	95W XL	BSW	24.7	9.9	8.5	10/32	1521	50
TP42021000	245/45ZR17	99W XL	BSW	25.6	9.7	8.0	10/32	1709	50
TP43131000	215/35ZR18	84W XL	BSW	23.9	8.7	7.5	10/32	1102	50
TP43102500	225/40ZR18	92W XL	BSW	25.2	9.3	8.0	10/32	1389	50
TP43107000	235/40ZR18	95W XL	BSW	25.6	9.7	8.5	10/32	1521	50
TP43107500	245/40ZR18	97W XL	BSW	27.6	9.7	8.5	10/32	1609	50
TP43108000	245/50ZR18	100W	BSW	27.6	9.8	7.5	11/32	1764	44
TP43142000	225/35ZR19	88W XL	BSW	25.4	9.3	8.0	10/32	1235	50
TP43145000	235/35ZR19	91W XL	BSW	25.5	9.7	8.5	10/32	1356	50

BSW - Black Sidewall

OWL - Outline White Letter

OBL - Outline Black Letter

XL - Extra Load

Sizes may be limited by market.

- Ultra High Performance All-Season tire designed for drivers that demand sporty handling with all-season traction
- Solid center rib designed for high-speed stability
- V-shaped unidirectional grooves for improved handling on dry and wet roads
- Multiple snow-biting grooves and optimal siping design for great traction on snowy surfaces
- 4 high-void, circumferential main grooves expel water for enhanced wet traction
- 5-pitch tread blocks and 2-in-1 groove designs minimize noise for a quiet, comfortable ride
- M&S All-season rated
- UTQG 420 AA A
- UTQG for SUV coming soon



Part #	Tire Size	Service Description /Ply Rating	Side wall	Overall Diameter (in)	Section Width (in)	Rim Width (in)	Tread Depth (in)	Max Load (lbs)	Max PSI
TP23843300	195/50R15	86V	BSW	22.7	7.8	6.0	10/32	1168	50
TP23856400	195/55R15	85V	BSW	23.5	7.8	6.0	10/32	1135	44
TP23846600	205/50R15	89V XL	BSW	23.1	8.3	6.5	10/32	1279	50
TP39311000	225/50R15	95V XL	BSW	23.9	9.1	7.0	10/32	1521	50
TP39605000	195/50R16	88V XL	BSW	23.7	7.8	6.0	10/32	1235	50
TP39580900	205/40ZR16	83W	BSW	22.4	8.2	7.5	10/32	1074	50
TP39585900	205/45ZR16	87W	BSW	23.4	8.2	7.0	10/32	1201	50
TP39633700	205/50R16	91V XL	BSW	24.1	8.4	6.5	10/32	1356	50
TP40915400	205/55R16	94V	BSW	24.9	8.3	6.5	10/32	1477	50
TP40903500	215/55R16	97V XL	BSW	25.3	8.8	7.0	10/32	1609	50
TP39625000	225/50R16	96V XL	BSW	24.9	9.1	7.0	10/32	1565	50
TP40919900	225/55R16	99V XL	BSW	25.8	9.1	7.0	10/32	1709	50
TP39643000	245/50R16	97V	BSW	25.7	9.8	7.5	10/32	1609	44
TP42503600	205/40ZR17	84W	BSW	23.5	8.2	7.5	10/32	1102	50
TP39586700	205/45ZR17	88W XL	BSW	24.3	8.0	7.0	10/32	1235	50
TP42395400	205/50ZR17	93W XL	BSW	25.1	8.3	6.5	10/32	1433	50
TP42505600	215/40ZR17	87W	BSW	23.8	8.5	7.5	10/32	1201	50
TP41990600	215/45ZR17	91W	BSW	24.8	8.3	7.0	10/32	1356	50
TP42401300	215/50ZR17	95W	BSW	25.6	8.8	7.0	10/32	1521	50
TP39588600	225/45ZR17	94W	BSW	25.1	8.7	7.5	10/32	1477	50
TP42407600	225/50ZR17	98W	BSW	25.8	9.1	7.0	10/32	1653	50
TP42411300	225/55ZR17	101W XL	BSW	26.8	9.1	7.0	10/32	1819	50
TP42002600	235/45ZR17	97W	BSW	25.4	9.2	8.0	10/32	1609	50
TP42102400	245/40ZR17	95W XL	BSW	24.7	9.8	8.5	10/32	1521	50
TP42018000	245/45ZR17	99W	BSW	25.7	9.5	8.0	10/32	1708	50
TP42514200	255/40ZR17	98W XL	BSW	25.0	10.1	9.0	10/32	1653	50
TP43126000	215/35ZR18	84W	BSW	23.9	8.6	7.5	10/32	1102	50
TP43101600	225/40ZR18	92W	BSW	25.2	9.1	8.0	10/32	1389	50
TP43107400	235/40ZR18	95W XL	BSW	25.4	9.4	8.5	10/32	1521	50
TP43026000	235/55ZR18	104W XL	BSW	28.3	9.5	7.5	-	1984	-
TP43030400	235/60ZR18	107W	BSW	29.1	9.5	7.0	-	2149	-
TP43107800	245/40ZR18	97W	BSW	25.7	9.8	8.5	10/32	1609	50
TP43266000	255/50ZR19	107W XL	BSW	29.1	10.3	8.0	-	2150	-
TP43268000	255/55ZR19	111W	BSW	30.0	10.2	8.0	-	2405	-
TP00057300	225/30ZR20	85W	BSW	25.4	9.1	8.0	10/32	1135	50
TP00041500	225/35ZR20	90W XL	BSW	26.2	9.1	8.0	10/32	1323	50
TP45100600	245/35ZR20	95W	BSW	26.5	9.7	8.5	10/32	1521	50
TP45103000	255/35ZR20	97W	BSW	27.0	10.0	9.0	10/32	1609	50
TP00147300	245/30ZR22	92W	BSW	27.8	9.8	8.5	10/32	1389	50
TP00150100	255/30ZR22	95W	BSW	28.1	10.2	9.0	10/32	1521	50
TP00167300	255/30ZR24	97W	BSW	30.1	10.2	9.0	10/32	1609	50

MA-Z4S SUV

TP43155600	255/45R20	105V	BSW	29.1	10.0	8.5	11/32	2039	50
TP00271300	275/40R20	106V	BSW	28.7	10.9	9.5	11/32	2094	50
TP45311200	275/45R20	110V	BSW	29.8	10.7	9.0	11/32	2337	50
TP45317000	275/55R20	117V	BSW	31.9	11.2	8.5	11/32	2833	50
TP45320400	285/50R20	116V	BSW	31.3	11.7	9.0	11/32	2756	50
TP00170100	265/35ZR22	102W	BSW	29.3	10.7	9.5	10/32	1874	50
TP00140300	265/40R22	106V	BSW	30.4	10.7	9.5	11/32	2094	50
TP45406000	305/40R22	114V	BSW	31.6	12.3	11.0	11/32	2601	50
TP45416000	305/45R22	118V	BSW	32.8	11.9	10.0	11/32	2910	50
TP00156200	295/35R24	110V	BSW	32.1	11.9	10.5	11/32	2337	50
TP45501000	305/35R24	114V	BSW	32.4	12.3	11.0	11/32	2601	50

BSW - Black Sidewall

OWL - Outline White Letter

OBL - Outline Black Letter

XL - Extra Load

Sizes may be limited by market.



- Ultra High Performance tire designed for sport-cars and sedans
- Aggressive directional tread pattern draws the perfect balance between wet and dry performance
- Solid center rib offers extra stability and confidence at higher speeds
- Rigid shoulder blocks ensure a stable contact patch for maximum cornering power
- Overall construction designed to maximize traction and improve response to all driver input
- Advanced compound improves wet traction and rolling resistance
- Jointless spiral-wound cap ply maximizes ride refinement and durability
- UTQG 280 AA A
- UTQG 220 AA A for 19" above W&Y rated and 17&18" Y rated



Part #	Tire Size	Service Description /Ply Rating	Side wall	Overall Diameter (in)	Section Width (in)	Rim Width (in)	Tread Depth (in)	Max Load (lbs)	Max PSI
TP00363100	175/50R13	76V XL	BSW	19.8	7.0	5.5	10/32	882	50
TP00329100	185/50R14	77V	BSW	21.3	7.6	6.0	9/32	908	44
TP37450000	205/60R14	88V	BSW	23.6	8.5	6.0	10/32	1235	44
TP23835000	195/45R15	78V	BSW	21.9	7.6	6.5	11/32	937	44
TP23842400	195/50R15	86V XL	BSW	22.7	7.8	6.0	10/32	1168	50
TP23853200	195/55R15	85V	BSW	23.4	7.9	6.0	10/32	1135	44
TP23846000	205/50R15	89V XL	BSW	23.0	8.3	6.5	10/32	1279	50
TP23868200	205/55R15	88V	BSW	23.9	8.4	6.5	10/32	1235	44
TP39422200	225/60R15	96V	BSW	25.6	9.1	6.5	11/32	1565	44
TP39570000	195/45R16	84V XL	BSW	22.9	7.6	6.5	11/32	1102	50
TP00365100	195/55R16	91H XL	BSW	24.4	7.9	6.0	10/32	1356	44
TP00364100	195/55R16	91V XL	BSW	24.4	7.9	6.0	10/32	1356	44
TP39580800	205/40ZR16	83W XL	BSW	22.6	8.6	7.5	10/32	1074	50
TP39585600	205/45ZR16	87W XL	BSW	23.2	8.3	7.0	11/32	1201	50
TP39634000	205/50ZR16	91W XL	BSW	24.0	8.2	6.5	10/32	1356	50
TP39709000	205/55ZR16	94W XL	BSW	24.8	8.3	6.5	10/32	1477	50
TP39581600	215/40ZR16	86W XL	BSW	22.8	8.8	7.5	11/32	1168	50
TP40909000	215/55ZR16	97W XL	BSW	25.2	8.9	7.0	11/32	1609	50
TP39584200	225/40ZR16	89W XL	BSW	23.2	9.3	8.0	11/32	1279	50
TP00107100	225/45ZR16	93W XL	BSW	23.9	9.0	7.5	10/32	1433	50
TP39622000	225/50ZR16	96W XL	BSW	24.8	9.0	7.0	11/32	1565	50
TP00505100	225/55ZR16	99W XL	BSW	25.7	9.1	7.0	11/32	1709	44
TP39626000	235/50ZR16	99W XL	BSW	25.2	9.6	7.5	11/32	1709	50
TP00108100	245/45ZR16	94W	BSW	24.7	9.8	8.0	11/32	1477	44
TP42503000	205/40ZR17	84W XL	BSW	23.6	8.5	7.5	10/32	1102	50
TP39586900	205/45ZR17	88W XL	BSW	24.3	8.3	7.0	11/32	1235	50
TP42396000	205/50ZR17	93W XL	BSW	25.1	8.2	6.5	10/32	1433	50
TP42505000	215/40ZR17	87W XL	BSW	23.9	8.7	7.5	11/32	1201	50

continued

Part #	Tire Size	Service Description / Ply Rating	Side wall	Overall Diameter (in)	Section Width (in)	Rim Width (in)	Tread Depth (in)	Max Load (lbs)	Max PSI
TP41999200	215/45ZR17	91W XL	BSW	24.8	8.3	7.0	11/32	1356	50
TP41999600	215/45ZR17	91Y XL	BSW	24.8	8.3	7.0	11/32	1356	50
TP42400900	215/50ZR17	91W	BSW	25.4	8.7	7.0	11/32	1356	44
TP50490200	215/55ZR17	98W XL	BSW	26.3	8.9	7.0	10/32	1653	44
TP50490000	215/55ZR17	94W	BSW	26.1	8.9	7.0	10/32	1477	44
TP42024000	225/45ZR17	94W XL	BSW	25.0	8.8	7.5	11/32	1477	50
TP41024200	225/45ZR17	94Y XL	BSW	25.0	8.9	7.5	11/32	1477	50
TP42402900	225/55ZR17	102W XL	BSW	26.7	9.1	7.0	11/32	1874	50
TP39583600	235/40ZR17	94W XL	BSW	24.5	9.8	8.5	11/32	1477	50
TP42009400	235/45ZR17	97W XL	BSW	25.3	9.4	8.0	11/32	1609	50
TP42009500	235/45ZR17	97Y XL	BSW	25.3	9.4	8.0	11/32	1609	50
TP42102000	245/40ZR17	95W XL	BSW	24.7	9.8	8.5	11/32	1521	50
TP42017000	245/45ZR17	99W XL	BSW	25.6	9.6	8.0	11/32	1709	50
TP42512000	255/40ZR17	98W XL	BSW	25.0	10.3	9.0	11/32	1653	50
TP00106100	255/45ZR17	102W XL	BSW	26.1	10.0	8.5	11/32	1874	50
TP00095100	225/35ZR18	87W XL	BSW	24.2	9.1	8.0	10/32	1202	50
TP43101000	225/40ZR18	92W XL	BSW	25.2	9.2	8.0	11/32	1389	50
TP00103100	225/45ZR18	95W XL	BSW	25.9	8.9	7.5	10/32	1521	50
TP43103000	235/40ZR18	95W XL	BSW	25.5	9.7	8.5	11/32	1521	50
TP39629000	235/50ZR18	101W XL	BSW	27.2	9.6	7.5	10/32	1819	50
TP43104800	245/40ZR18	97W XL	BSW	25.8	9.8	8.5	11/32	1609	50
TP00056100	245/45ZR18	100W XL	BSW	26.7	9.4	8.0	11/32	1764	50
TP43502400	255/35ZR18	94W XL	BSW	25.0	10.2	9.0	11/32	1477	50
TP43526000	255/45ZR18	103W XL	BSW	27.1	10.0	8.5	11/32	1929	50
TP43508000	265/35ZR18	97W XL	BSW	25.4	10.8	9.5	11/32	1609	50
TP00090100	275/35ZR18	99W XL	BSW	25.6	11.2	9.5	10/32	1709	50
TP00054100	215/35ZR19	85W XL	BSW	24.9	8.8	7.5	9/32	1135	50
TP43220000	225/35ZR19	88W XL	BSW	25.4	9.3	8.0	10/32	1235	50
TP43240000	235/35ZR19	91W XL	BSW	25.5	9.7	8.5	10/32	1356	50
TP43260000	245/35ZR19	93W XL	BSW	25.8	9.7	8.5	10/32	1433	50
TP00098100	245/40ZR19	98W XL	BSW	26.8	9.8	8.5	10/32	1653	50
TP43280000	255/40ZR19	100W XL	BSW	27.2	10.4	9.0	10/32	1764	50
TP00078100	265/30ZR19	93W XL	BSW	25.3	10.7	9.5	10/32	1433	50
TP00571000	225/30ZR20	85W XL	BSW	25.4	9.3	8.0	9/32	1135	50
TP00041100	225/35ZR20	90W XL	BSW	26.3	9.1	8.0	10/32	1323	50
TP00147100	245/30ZR20	95W XL	BSW	25.8	9.8	8.5	10/32	1521	50
TP45100000	245/35ZR20	95W XL	BSW	26.9	9.7	8.5	10/32	1521	50
TP45102000	255/35ZR20	97W XL	BSW	27.1	10.2	9.0	11/32	1609	50
TP45150000	285/30ZR20	95W	BSW	26.7	11.4	10.0	11/32	1521	44
TP00234100	245/30ZR22	92W XL	BSW	27.8	9.8	8.5	10/32	1389	50
TP00423100	255/30ZR22	95W XL	BSW	28.1	10.2	9.0	10/32	1521	50
TP00425100	265/35ZR22	102W XL	BSW	29.3	10.7	9.5	10/32	1875	50
TP00167100	255/30ZR24	97W XL	BSW	30.1	10.4	9.0	10/32	1609	50

BSW - Black Sidewall

OWL - Outline White Letter

OBL - Outline Black Letter

XL - Extra Load

Sizes may be limited by market.

- All-Season High Performance tire designed for sport touring vehicles
- Directional high-void pattern combined with specialized compound optimizes all-season performance
- Jointless spiral-wound cap ply maximizes ride refinement and durability
- High Performance reinforcement belt package improves stability and handling
- Unique sidewall construction designed to strike an optimal balance between cornering performance and ride refinement
- M&S All-season rated
- UTQG 300 A A



Part #	Tire Size	Service Description / Ply Rating	Side wall	Overall Diameter (in)	Section Width (in)	Rim Width (in)	Tread Depth (in)	Max Load (lbs)	Max PSI
TP16702000	205/60R13	86H	BSW	22.7	8.4	6.0	10/32	1168	44
TP18240000	185/55R14	80V	BSW	21.9	7.7	6.0	10/32	992	44
TP16026000	185/60R14	82H	BSW	22.8	7.5	5.5	10/32	1047	44
TP16028000	185/60R14	82V	BSW	22.8	7.6	5.5	10/32	1047	44
TP17627000	185/65R14	86H	BSW	23.4	7.4	5.5	10/32	1168	36
TP17629000	185/65R14	86V	BSW	23.4	7.4	5.5	10/32	1168	36
TP18192000	195/60R14	86H	BSW	23.2	7.9	6.0	10/32	1168	44
TP18194000	195/60R14	86V	BSW	23.2	8.0	6.0	10/32	1168	44
TP23903600	195/65R14	89H	BSW	23.9	7.8	6.0	10/32	1279	44
TP23903800	195/65R14	89V	BSW	24.0	8.0	6.0	10/32	1279	36
TP23836000	165/50R15	72V	BSW	21.5	6.3	5.0	10/32	783	44
TP23834000	195/45ZR15	78W	BSW	22.0	7.6	6.5	10/32	937	44
TP00045100	P195/50R15	82V	BSW	22.8	7.7	6.0	10/32	1047	44
TP38006000	195/60R15	88H	BSW	24.2	7.9	6.0	10/32	1235	44
TP38007000	195/60R15	88V	BSW	24.3	8.0	6.0	10/32	1235	44
TP23978000	195/65R15	91H	BSW	24.9	7.8	6.0	10/32	1356	44
TP23978400	195/65R15	91V	BSW	25.0	8.0	6.0	10/32	1356	36
TP00046100	P205/50R15	86V	BSW	23.1	8.3	6.5	10/32	1168	44
TP38055200	205/60R15	95H	BSW	24.8	8.3	6.0	10/32	1521	44
TP38055400	205/60R15	95V	BSW	24.7	8.1	6.0	10/32	1521	50
TP15776000	205/65R15	94H	BSW	25.5	8.2	6.0	10/32	1477	50
TP15776400	205/65R15	94V	BSW	25.5	8.3	6.0	10/32	1477	36
TP18453000	215/60R15	94H	BSW	25.2	8.8	6.5	10/32	1477	44
TP18455000	215/60R15	94V	BSW	25.2	8.8	6.5	10/32	1477	44
TP00047100	P195/50R16	84V	BSW	23.8	7.7	6.0	10/32	1074	44
TP39580200	P205/40R16	79V	BSW	22.4	8.5	7.5	10/32	963	44
TP39585400	205/45ZR16	87W XL	BSW	23.2	8.2	7.0	10/32	1201	50
TP39585000	P205/45R16	83V	BSW	23.2	8.1	7.0	10/32	1074	44
TP39612000	205/50R16	88V	BSW	24.2	8.3	6.5	10/32	1235	44
TP39701200	205/55R16	91H	BSW	25.0	8.3	6.5	10/32	1356	44
TP00049100	P205/55R16	91V	BSW	25.0	8.3	6.5	10/32	1356	44
TP39581500	215/40ZR16	86W XL	BSW	22.8	8.4	7.5	10/32	1168	50
TP39581200	P215/40R16	82V	BSW	22.8	8.7	7.5	10/32	1047	44
TP39594000	225/45ZR16	89W	BSW	23.9	8.7	7.5	10/32	1279	44

continued

Part #	Tire Size	Service Description /Ply Rating	Side wall	Overall Diameter (in)	Section Width (in)	Rim Width (in)	Tread Depth (in)	Max Load (lbs)	Max PSI
TP39590000	P225/45R16	89V	BSW	23.9	8.8	7.5	10/32	1279	44
TP00048100	P225/50R16	92V	BSW	25.0	9.2	7.0	10/32	1389	44
TP41000000	225/60R16	98V	BSW	26.6	9.1	6.5	10/32	1653	44
TP41010000	235/60R16	100V	BSW	27.2	9.6	7.0	11/32	1764	44
TP42502200	P205/40R17	80V	BSW	23.4	8.3	7.5	10/32	992	44
TP42502700	205/40ZR17	86W XL	BSW	23.5	8.4	7.5	10/32	1168	50
TP39586200	P205/45R17	84V	BSW	24.1	8.1	7.0	10/32	1102	44
TP39586400	205/45ZR17	84W	BSW	24.3	8.2	7.0	10/32	1102	44
TP42504800	215/40ZR17	87W XL	BSW	23.9	8.5	7.5	10/32	1201	50
TP42504200	P215/40R17	83V	BSW	23.7	8.5	7.5	10/32	1074	44
TP41992000	P215/45R17	87V	BSW	24.6	8.3	7.0	10/32	1201	44
TP41999000	215/45ZR17	91W XL	BSW	24.7	8.4	7.0	10/32	1356	50
TP42400600	215/50ZR17	91W	BSW	25.4	8.8	7.0	10/32	1356	44
TP42400200	P215/50R17	91V	BSW	25.4	8.7	7.0	10/32	1356	44
TP39587800	225/45ZR17	94W XL	BSW	24.9	8.8	7.5	10/32	1477	50
TP39587200	P225/45R17	90V	BSW	25.0	8.7	7.5	10/32	1323	44
TP42402300	P225/55R17	98V	BSW	26.8	9.1	7.0	10/32	1653	44
TP39583400	235/40ZR17	94W XL	BSW	24.4	9.4	8.5	10/32	1477	50
TP39582000	P235/40R17	90V	BSW	24.4	9.6	8.5	10/32	1323	44
TP42009200	235/45ZR17	97W XL	BSW	25.4	9.2	8.0	10/32	1609	50
TP42004000	P235/45R17	93V	BSW	25.3	9.3	8.0	10/32	1433	44
TP42016000	245/45ZR17	95W	BSW	25.5	9.5	8.0	10/32	1521	44
TP42014000	P245/45R17	95V	BSW	25.5	9.5	8.0	10/32	1521	44
TP42510000	255/40ZR17	94W	BSW	25.0	10.3	9.0	11/32	1477	44
TP42500200	P255/40R17	94V	BSW	25.0	10.4	9.0	11/32	1477	44
TP42508600	275/40ZR17	98W	BSW	25.6	11.0	9.5	11/32	1653	44
TP42508200	P275/40R17	98V	BSW	25.6	10.9	9.5	11/32	1653	44
TP00097100	215/35ZR18	84W XL	BSW	24.0	8.7	7.5	9/32	1102	50
TP43100200	P225/40R18	88V	BSW	25.2	9.1	8.0	10/32	1235	44
TP43100800	225/40ZR18	92W XL	BSW	25.2	9.1	8.0	10/32	1235	50
TP43134000	225/45ZR18	91W	BSW	26.1	8.7	7.5	10/32	1356	44
TP43132000	225/45R18	91V	BSW	26.1	8.7	7.5	10/32	1356	44
TP43102200	P235/40R18	91V	BSW	25.3	9.4	8.5	10/32	1356	44
TP43102900	235/40ZR18	95W XL	BSW	25.3	9.4	8.5	10/32	1521	50
TP43104200	P245/40R18	93V	BSW	25.8	9.6	8.5	10/32	1433	44
TP43104700	245/40ZR18	97W XL	BSW	25.7	9.8	8.5	10/32	1609	50
TP00005100	245/45ZR18	100W XL	BSW	26.6	9.5	8.0	10/32	1764	50
TP00050100	P255/35ZR18	90W	BSW	25.0	10.2	9.0	10/32	1323	44
TP43524000	255/45ZR18	99W	BSW	27.0	10.1	8.5	11/32	1709	44
TP43520000	P255/45R18	99V	BSW	27.0	10.1	8.5	11/32	1709	44
TP00051100	P265/35ZR18	93W	BSW	25.3	10.7	9.5	10/32	1433	44

BSW - Black Sidewall

OWL - Outline White Letter

OBL - Outline Black Letter

XL - Extra Load

Sizes may be limited by market.





- Ultra High Performance tire designed for driving enthusiasts
- Directional tread pattern features large semi-continuous shoulder blocks to maximize contact patch under spirited driving
- Solid center rib offers extra stability and confidence at higher speeds
- Enhanced sidewall design with a hard bead filler maximizes steering feedback and lateral stability
- Four wide circumferential grooves improve hydroplaning resistance
- Jointless spiral-wound cap ply maximizes ride refinement and durability
- UTQG 240 AA A

Part #	Tire Size	Service Description /Ply Rating	Side wall	Overall Diameter (in)	Section Width (in)	Rim Width (in)	Tread Depth (in)	Max Load (lbs)	Max PSI
TP00420100	185/60R15	88V XL	BSW	23.7	7.4	5.5	10/32	1235	50
TP00113100	195/50R15	86V XL	BSW	22.7	7.7	6.0	9/32	1168	50
TP00114100	195/55R15	85V	BSW	23.4	7.6	6.0	9/32	1135	44
TP00435100	195/60R15	88V	BSW	24.2	7.9	6.0	10/32	1235	44
TP00412100	205/60R15	95V XL	BSW	24.7	8.2	6.0	10/32	1521	50
TP00431100	195/65R15	100V XL	BSW	26.0	8.8	6.5	9/32	1764	50
TP00362100	215/55R16	91V XL	BSW	24.4	7.9	6.0	9/32	1356	50
TP00136100	205/45ZR16	87W XL	BSW	23.2	8.3	7.0	9/32	1202	50
TP00343100	205/50ZR16	91W	BSW	24.1	8.4	6.5	10/32	1201	44
TP00111100	205/55ZR16	94W XL	BSW	24.9	8.2	6.5	9/32	1477	50
TP00428100	215/60R16	99V XL	BSW	26.1	8.7	6.5	10/32	1709	50
TP00354100	225/55ZR16	99W XL	BSW	25.6	9.0	7.0	9/32	1709	50
TP00219100	205/40ZR17	84Y XL	BSW	23.5	8.4	7.5	9/32	1102	50
TP00144100	205/40ZR17	84W XL	BSW	23.5	8.5	7.5	9/32	1102	50
TP00345000	205/45ZR17	88W XL	BSW	24.7	8.3	7.0	9/32	1235	50
TP00130100	215/45ZR17	91W XL	BSW	24.7	8.3	7.0	9/32	1356	50
TP00220100	215/45ZR17	91Y XL	BSW	24.7	8.4	7.0	9/32	1356	50
TP42398300	215/50ZR17	95W XL	BSW	25.4	8.8	6.0	9/32	1521	50
TP50493500	215/55ZR17	98W XL	BSW	26.3	8.7	7.0	9/32	1653	50
TP00134100	225/45ZR17	94W XL	BSW	25.0	8.8	7.5	9/32	1477	50
TP00221100	225/45ZR17	94Y XL	BSW	25.0	8.9	7.5	9/32	1477	50
TP41995600	225/50ZR17	98W XL	BSW	25.9	9.1	6.0	9/32	1653	50
TP42432000	225/55ZR17	101W XL	BSW	26.7	9.0	7.0	9/32	1819	50
TP00129100	235/45ZR17	97W XL	BSW	25.4	9.3	8.0	10/32	1609	50
TP00133100	235/45ZR17	97Y XL	BSW	25.4	9.3	8.0	10/32	1609	50
TP00465100	225/40ZR18	92Y XL	BSW	24.9	9.3	8.0	10/32	1389	50
TP43101800	225/40ZR18	92W XL	BSW	24.9	9.2	8.0	10/32	1389	50
TP43135000	225/45ZR18	95W XL	BSW	25.9	8.9	6.5	10/32	1521	50
TP00466100	235/40ZR18	95Y XL	BSW	25.4	9.5	8.5	10/32	1521	50
TP00135100	235/40ZR18	95W XL	BSW	25.4	9.6	8.5	10/32	1521	50
TP00136600	235/45ZR18	98W XL	BSW	26.3	9.1	8.0	11/32	1653	50
TP39629500	235/50ZR18	101W XL	BSW	27.2	9.6	6.0	10/32	1819	50
TP00609100	245/40ZR18	97W XL	BSW	25.1	9.1	8.0	10/32	1609	50
TP00131100	255/45ZR18	103W XL	BSW	27.0	10.0	8.5	10/32	1929	50
TP00450100	265/35ZR18	97W XL	BSW	25.3	10.4	8.5	10/32	1609	50
TP00449100	265/35ZR18	97Y XL	BSW	25.3	10.4	8.5	10/32	1609	50
TP00506100	275/35ZR18	99W XL	BSW	25.6	10.8	8.5	10/32	1709	50
TP00138100	275/45ZR18	103W	BSW	27.8	10.7	9.0	10/32	1929	44
TP00426100	255/40ZR19	100W XL	BSW	25.4	9.5	8.5	10/32	1764	50

BSW - Black Sidewall

OWL - Outline White Letter

OBL - Outline Black Letter

XL - Extra Load

Sizes may be limited by market.

- New nano-silica infused compound combined with environmentally friendly oils reduces rolling resistance by 11%*
- New casing design improves road-impact dampening characteristics and enhances ride comfort
- Computer-aided tread pattern design provides class-leading braking performance and safety
- Multi-pitch technology minimizes pattern noise and increases overall ride refinement
- UTQG 320 A A

*Internal Testing Conditions



FDSS Rubber: Highly dispersible nano-silica fillers interact with functional groups on rubber chains - strengthening filler-rubber interaction for lower rolling resistance.

Fuel Economy: Lower rolling resistance means less fuel consumption and smog emissions from vehicle.

Environmental Concerns: Use of environmentally-friendly oils helps the MS800 to surpass European environmental standards and minimize environmental threat.

Part #	Tire Size	Service Description /Ply Rating	Side wall	Overall Diameter (in)	Section Width (in)	Rim Width (in)	Tread Depth (in)	Max Load (lbs)	Max PSI
TP00441100	175/70R13	82H	BSW	22.7	7.0	5.0	8/32	1047	44
TP00631100	185/60R14	82V	BSW	22.8	7.4	5.5	8/32	1047	44
TP00637100	185/65R15	88H	BSW	24.4	7.4	5.5	8/32	1235	44
TP00382100	195/55R15	85V	BSW	23.4	7.9	6.0	8/32	1135	44
TP00404100	195/60R15	88V	BSW	24.2	7.9	6.0	8/32	1235	44
TP00139100	195/65R15	88H	BSW	24.2	7.9	6.0	8/32	1235	44
TP00518300	195/65R15	88V	BSW	24.2	7.9	6.0	8/32	1235	44
TP00381100	205/65R15	95V	BSW	25.5	8.2	6.0	8/32	1521	44
TP00624100	225/60R15	96V	BSW	25.6	9.0	6.5	8/32	1565	44
TP00383100	195/55R16	87V	BSW	24.4	7.9	6.0	8/32	1201	44
TP00358100	205/55R16	91V	BSW	24.9	8.4	6.5	8/32	1356	44
TP00357100	205/60R16	92V	BSW	25.7	8.2	6.0	8/32	1389	44
TP00590100	215/55R16	97V XL	BSW	25.3	8.9	7.0	8/32	1609	50
TP00386100	215/60R16	95V	BSW	26.1	8.7	6.5	8/32	1521	44
TP39589300	205/45ZR17	84W	BSW	24.3	8.1	7.0	8/32	1102	44
TP41994800	215/45ZR17	91W	BSW	24.6	8.4	7.0	8/32	1356	50
TP42413400	215/50R17	95V	BSW	25.5	8.9	7.0	8/32	1521	50
TP00359100	215/55R17	94V	BSW	26.3	8.9	7.0	8/32	1477	44
TP00657100	225/50ZR17	98W XL	BSW	25.9	9.2	7.0	8/32	1653	50
TP00605100	225/55R17	97V	BSW	26.8	9.2	7.0	8/32	1609	44
TP43122000	225/40ZR18	92W	BSW	25.1	9.1	8.0	8/32	1389	50
TP43135600	225/45ZR18	95W	BSW	25.9	8.9	7.5	8/32	1521	50
TP00136800	235/45ZR18	98W	BSW	26.3	9.3	8.0	8/32	1653	50

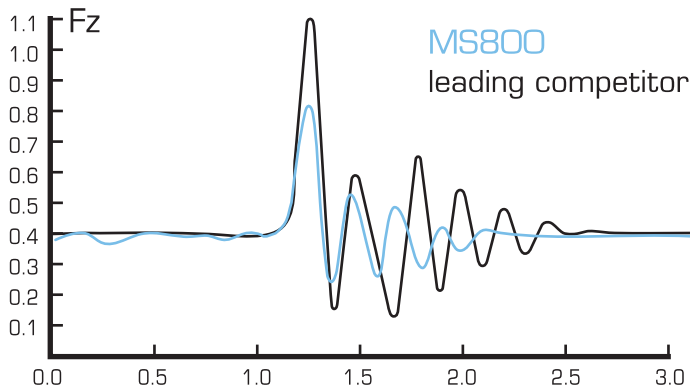
BSW - Black Sidewall

OWL - Outline White Letter

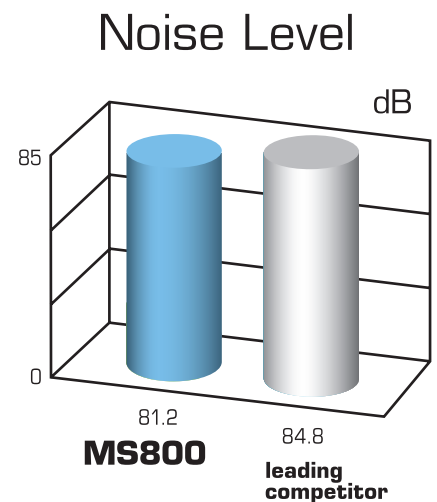
OBL - Outline Black Letter

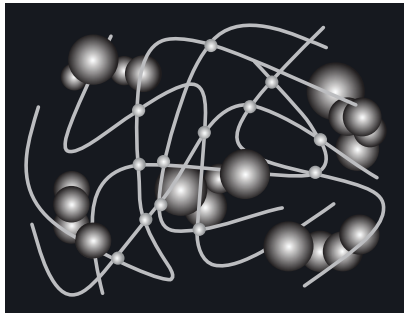
XL - Extra Load

Sizes may be limited by market.

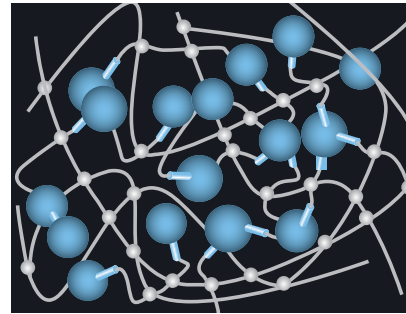


Road imperfections such as expansion joints and potholes are major sources of discomfort and fatigue for a car's occupants. The Maxxis MS800 is designed to absorb and dampen shocks, minimizing impact and disturbance to the interior cabin. As the graph above shows, internal tests prove that the MS800 can absorb shocks better and faster than the leading competitor's tire in its class.



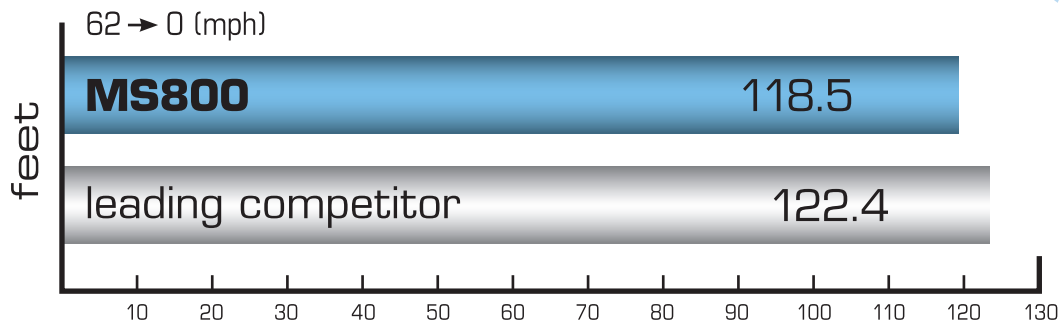
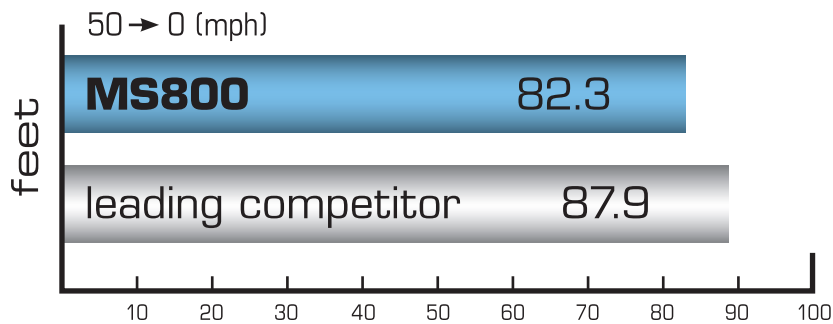


Inferior dispersion allows traditional silica fillers in rubber compounds to cluster together – generating wasted heat.

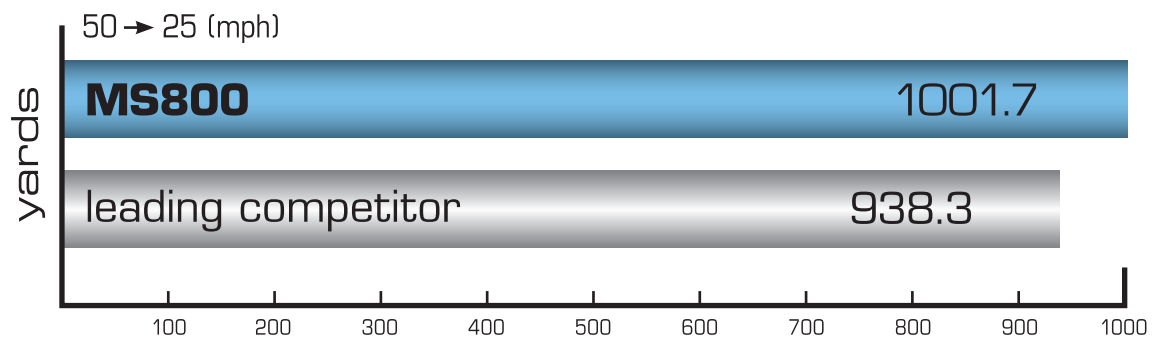


Highly dispersible silica in Maxxis' new FDSS compound promotes excellent filler dispersion – minimizing heat generation and energy dissipation.

The MS800 tire outperforms the leading competitor in braking performance. Internal testing shows the MS800 shortening straight-line braking distance by 5.6 feet in wet conditions (50mph – 0) and 3.9 feet in dry conditions (62mph-0).



Internal Testing: The MS800 travels 63.4 yards more than the leading competitor's product during a coast-down vehicle test from 50 mph to 25 mph.



- Ultra High Performance tire designed for premium touring vehicles
- Computer-optimized tread pattern designed to minimize pattern noise
- Semi-continuous outer shoulder design provides improved steering precision and response
- Strategically placed siping enhances wet traction
- 7 circumferential grooves offer superior hydroplaning resistance
- Overall construction design focuses on improving overall driving refinement
- Jointless spiral-wound cap ply maximizes ride refinement and durability
- UTQG 320 A A



Part #	Tire Size	Service Description / Ply Rating	Side wall	Overall Diameter (in)	Section Width (in)	Rim Width (in)	Tread Depth (in)	Max Load (lbs)	Max PSI
TP00500100	155/55R14	69V	BSW	25.9	6.1	7.0	10/32	716	44
TP17624600	185/65R14	86H	BSW	23.6	7.3	5.5	10/32	1168	44
TP00127100	195/60R14	86H	BSW	23.2	7.9	6.0	10/32	1168	44
TP18292100	185/60R15	84V	BSW	23.7	7.4	5.5	10/32	1047	44
TP18310600	185/65R15	88V	BSW	24.5	7.5	5.5	10/32	1235	44
TP00109100	195/50R15	86V XL	BSW	22.5	8.3	6.0	10/32	1168	50
TP23853600	195/55R15	85V	BSW	23.4	7.8	6.0	10/32	1135	44
TP38018000	195/60R15	88V	BSW	24.2	7.9	6.0	10/32	1235	44
TP23983200	195/65R15	91V	BSW	25.0	7.8	6.0	10/32	1356	44
TP38055800	205/60R15	91V	BSW	24.7	8.1	6.0	10/32	1356	44
TP15768500	205/65R15	94V	BSW	25.5	8.2	6.0	10/32	1477	44
TP15768600	205/65R15	95V	BSW	25.5	8.2	6.0	10/32	1521	44
TP50191200	205/70R15	96H	BSW	26.3	8.4	6.0	10/32	1565	36
TP26067200	215/70R15	98V	BSW	26.9	8.6	6.5	10/32	1653	44
TP39611000	195/50R16	88V XL	BSW	23.7	7.9	6.0	10/32	1235	50
TP39654000	195/60R16	89V	BSW	25.3	7.8	6.0	10/32	1279	44
TP39702200	205/55ZR16	91W	BSW	25.0	8.2	6.5	10/32	1356	44
TP39702000	205/55R16	91V	BSW	25.0	8.3	6.5	10/32	1356	44
TP40943400	205/60ZR16	92W	BSW	25.7	8.1	6.0	10/32	1389	44
TP40943000	205/60R16	92V	BSW	25.7	8.1	6.0	10/32	1389	44
TP40969800	205/65R16	95V	BSW	26.5	8.2	6.0	10/32	1521	44
TP40907100	215/55ZR16	93W	BSW	25.3	8.8	7.0	10/32	1433	44
TP40955200	215/60ZR16	95W	BSW	26.2	8.5	6.5	10/32	1521	44
TP40955000	215/60R16	95V	BSW	26.2	8.7	6.5	10/32	1521	44
TP40978400	215/65R16	98V	BSW	27.1	8.7	6.5	10/32	1653	44
TP00267100	225/55ZR16	95W	BSW	25.8	9.0	7.0	10/32	1521	44
TP40996400	225/60R16	98V	BSW	26.6	8.9	6.5	10/32	1653	44
TP40996500	225/60ZR16	98W	BSW	26.8	8.9	6.5	10/32	1653	44
TP41014300	235/60ZR16	100W	BSW	27.2	9.4	7.0	10/32	1764	44
TP41014100	235/60R16	100V	BSW	27.1	9.5	7.0	10/32	1764	44
TP39587100	205/45ZR17	84W	BSW	24.3	8.3	7.0	10/32	1102	44
TP00039100	215/45ZR17	91W XL	BSW	24.7	8.3	7.0	10/32	1356	50
TP42398900	215/50R17	95V XL	BSW	25.6	8.7	7.0	10/32	1521	50
TP42404700	215/55R17	94V	BSW	26.3	8.8	7.0	10/32	1477	44
TP42407100	215/55ZR17	94W	BSW	26.4	8.9	7.0	10/32	1477	44
TP00153100	225/50R17	98V XL	BSW	25.9	8.9	7.0	10/32	1653	50
TP00212100	225/65R17	102H	BSW	28.5	8.8	6.5	10/32	1875	44
TP43120000	225/40ZR18	92W XL	BSW	25.1	9.1	8.0	10/32	1389	50
TP43103300	235/40ZR18	95W XL	BSW	25.3	9.7	8.5	10/32	1521	50



- Recommended for dry road racing applications ONLY
- Tread pattern design increases cornering power and steering response
- Sidewall construction designed to maximize steering response, precision and feedback
- Belt-package optimized to generate maximum cornering power and overall stability
- Special racing compound optimized for excellent heat-cycle, treadwear and traction performance
- High-stiffness overall construction increases handling precision and overall response
- UTQG 100 AA A

Part #	Tire Size	Service Description /Ply Rating	Side wall	Overall Diameter (in)	Section Width (in)	Rim Width (in)	Tread Depth (in)	Max Load (lbs)	Max PSI
TP23841000	195/50R15	82V	BSW	22.7	8.0	6.0	6/32	1047	44

- Double steel-belted construction for long-lasting wear and uniformity
- Jointless spiral-wrapped full nylon cap for added strength and durability
- Superior mileage with a quiet, comfortable ride
- Solid center rib for improved handling and high-quality performance
- Advanced tread design channels out water to resist hydroplaning
- Stylish whitewall with an attractive black serrated sidewall
- M&S All-season rated
- UTQG 480 A B (70 series)
- UTQG 480 B B (75 series)
- UTQG 420 B B (80 series)



Part #	Tire Size	Service Description /Ply Rating	Side wall	Overall Diameter (in)	Section Width (in)	Rim Width (in)	Tread Depth (in)	Max Load (lbs)	Max PSI
TP33200000	P155/80R13	79S	RWW	22.8	6.2	4.5	11/32	959	35
TP34200000	P165/80R13	83S	RWW	23.4	6.7	4.5	11/32	1069	35
TP35011000	P175/80R13	86S	RWW	24.0	7.0	5.0	11/32	1179	35
TP36520000	P185/80R13	90S	RWW	24.7	7.4	5.0	12/32	1323	35
TP27005000	P185/75R14	89S	RWW	25.0	7.3	5.0	11/32	1290	35
TP27008000	P195/75R14	92S	RWW	25.7	7.9	5.5	11/32	1400	35
TP39001000	P205/70R14	93S	RWW	25.4	8.3	6.0	12/32	1433	35
TP27013000	P205/75R14	95S	RWW	26.3	8.1	5.5	11/32	1532	35
TP26050000	P215/70R14	96S	RWW	26.0	8.5	6.5	12/32	1554	35
TP39202000	P205/70R15	95S	RWW	26.4	8.3	6.0	12/32	1499	35
TP27017000	P205/75R15	97S	RWW	27.3	8.1	5.5	11/32	1598	35
TP26058000	P215/70R15	98S	RWW	27.0	8.6	6.5	12/32	1653	35
TP27022000	P215/75R15	100S	RWW	27.8	8.7	6.0	11/32	1742	35
TP25710000	P225/70R15	100S	RWW	27.6	9.2	6.5	12/32	1753	35
TP27025000	P225/75R15	102S	RWW	28.4	8.9	6.0	11/32	1874	35
TP27027000	P235/75R15	105S	RWW	29.0	9.4	6.5	11/32	2039	35



- Jointless spiral-wrapped cap ply for added strength and durability
- Six circumferential grooves for outstanding hydroplaning resistance and wet weather handling
- Full casing reinforcement package for extra durability
- Five rib pattern design for improved wear pattern and reduced pattern noise
- M&S All-season rated
- UTQG 400 A A 280 A B (80 series)

Part #	Tire Size	Service Description /Ply Rating	Side wall	Overall Diameter (in)	Section Width (in)	Rim Width (in)	Tread Depth (in)	Max Load (lbs)	Max PSI
TP09788600	155/80R12	77T	BSW	21.9	6.3	4.5	10/32	915	38
TP33152800	155/80R13	79T	BSW	22.8	6.3	4.5	10/32	963	38
TP12377500	165/70R13	79T	BSW	22.3	6.8	5.0	10/32	963	41
TP34008000	165/80R13	83T	BSW	23.5	6.6	4.5	10/32	1074	38
TP20541400	175/70R13	82T	BSW	22.8	6.9	5.0	10/32	1047	44
TP23077400	185/70R13	86T	BSW	23.4	7.5	5.5	10/32	1168	44
TP15703200	175/65R14	82T	BSW	22.9	7.0	5.0	10/32	1047	44
TP15902100	175/70R14	84T	BSW	23.9	6.9	5.0	10/32	1102	41
TP16025800	185/60R14	82H	BSW	22.8	7.3	5.5	10/32	1047	44
TP17634400	185/65R14	86H	BSW	23.4	7.4	5.5	10/32	1168	44
TP23556800	185/70R14	88T	BSW	24.5	7.6	5.5	10/32	1235	44
TP18005300	195/60R14	86H	BSW	23.2	7.9	6.0	10/32	1168	44
TP23902800	195/65R14	89H	BSW	23.9	8.0	6.0	10/32	1433	44
TP24579400	195/70R14	91T	BSW	25.2	8.1	6.0	10/32	1356	44
TP39158600	205/70R14	95T	BSW	25.5	8.4	6.0	10/32	1521	44
TP18293200	185/60R15	84H	BSW	23.7	7.3	5.5	10/32	1102	44
TP18314500	185/65R15	88H	BSW	24.5	7.4	5.5	10/32	1235	44
TP38002400	195/60R15	88H	BSW	24.2	7.9	6.0	10/32	1235	44
TP23956900	195/65R15	91H	BSW	24.9	8.0	6.0	10/32	1356	44
TP38062200	205/60R15	91T	BSW	24.7	8.1	6.0	10/32	1356	44
TP15765900	205/65R15	94T	BSW	25.4	8.3	6.0	10/32	1477	44
TP18451800	215/60R15	94T	BSW	25.2	8.7	6.5	10/32	1477	44
TP39404700	215/65R15	96H	BSW	26.0	8.8	6.5	10/32	1565	44
TP00137900	205/55R16	90H	BSW	25.0	8.4	6.5	10/32	1323	44
TP39720300	215/55R16	93H	BSW	25.3	9.0	7.0	10/32	1433	44
TP40908800	215/60R16	95T	BSW	26.1	8.7	6.5	10/32	1521	44
TP40978300	215/65R16	98T	BSW	27.0	8.8	6.5	10/32	1653	44
TP40996600	225/60R16	98T	BSW	26.6	8.9	6.5	10/32	1653	44
TP40993100	225/60R16	98S	RWW	26.6	8.9	6.5	10/32	1653	44

BSW - Black Sidewall

OWL - Outline White Letter

RWW - Raised Whitewall

XL - Extra Load

Sizes may be limited by market.

- All-season High Performance tire designed for premium touring vehicles
- Non-directional tread pattern designed to minimize pattern noise
- Four high-void circumferential grooves offer excellent hydroplaning resistance
- Overall construction design focuses on maximizing ride refinement
- Jointless spiral-wound cap ply and edge ply maximize ride refinement and durability
- M&S All-season rated
- UTQG 380 A A (55 Series)
- UTQG 440 A A (60/65/70 Series BSW)
- UTQG 440 A B (70 Series OWL)



Part #	Tire Size	Service Description /Ply Rating	Side wall	Overall Diameter (in)	Section Width (in)	Rim Width (in)	Tread Depth (in)	Max Load (lbs)	Max PSI
TP15867000	175/70R12	80H	BSW	21.7	6.9	5.0	10/32	992	36
TP15865000	175/70R12	80T	OWL	21.7	6.9	5.0	10/32	992	36
TP09992000	155/65R13	73T	BSW	21.0	6.1	4.5	10/32	805	44
TP10014000	155/70R13	75H	BSW	21.6	6.1	4.5	10/32	853	36
TP11303000	165/60R13	73H	BSW	21.8	6.7	5.0	10/32	805	44
TP11313000	165/65R13	77H	BSW	21.4	6.6	5.0	10/32	908	36
TP12402000	165/70R13	79H	BSW	22.1	6.6	5.0	10/32	963	36
TP20400000	175/60R13	77H	BSW	21.3	6.9	5.0	10/32	908	44
TP20544000	175/70R13	82H	BSW	22.7	7.0	5.0	10/32	1047	36
TP20544200	175/70R13	82T	OWL	22.7	6.9	5.0	10/32	1047	36
TP16015000	185/60R13	80V	BSW	21.7	7.5	5.5	10/32	992	44
TP16016000	185/60R13	80H	BSW	21.8	7.3	5.5	10/32	992	44
TP23117000	185/70R13	86H	BSW	23.2	7.5	5.5	10/32	1168	36
TP23117200	185/70R13	86T	OWL	23.2	7.3	5.5	10/32	1168	36
TP14681000	165/60R14	75H	BSW	21.8	6.7	5.0	10/32	853	44
TP14696000	165/65R14	79H	BSW	22.4	6.6	5.0	10/32	963	36
TP15038000	165/70R14	81H	BSW	23.2	6.6	5.0	10/32	1019	36
TP15722200	175/65R14	82H	BSW	23.0	7.0	5.0	10/32	1047	36
TP15908500	175/70R14	88T	BSW	23.7	6.9	5.0	10/32	1235	36
TP15908000	175/70R14	84H	BSW	23.7	6.9	5.0	10/32	1102	36
TP16032400	185/60R14	82V	BSW	22.8	7.4	5.5	10/32	1047	44
TP16032200	185/60R14	82H	BSW	22.8	7.3	5.5	10/32	1047	44
TP17626200	185/65R14	86H	BSW	23.5	7.4	5.5	10/32	1168	36
TP23610000	185/70R14	88H	BSW	24.3	7.5	5.5	10/32	1235	36
TP23612000	185/70R14	88T	OWL	24.3	7.5	5.5	10/32	1235	36
TP37045200	185/80R14	91T	BSW	25.7	7.3	5.0	10/32	1356	35
TP18195200	195/60R14	86V	BSW	23.2	7.8	6.0	10/32	1168	44
TP18195000	195/60R14	86H	BSW	23.2	7.8	6.0	10/32	1168	44
TP23903400	195/65R14	90H	BSW	24.0	8.0	6.0	10/32	1323	36
TP23903500	195/65R14	89H	BSW	24.0	8.0	6.0	10/32	1279	36
TP25608000	195/70R14	91H	BSW	24.8	8.0	6.0	10/32	1356	36
TP25609000	195/70R14	91T	OWL	24.8	8.0	6.0	10/32	1356	36
TP37420000	205/60R14	88H	BSW	23.7	8.2	6.0	10/32	1235	44
TP39155200	205/70R14	95H	BSW	25.4	8.4	6.0	10/32	1521	36

continued

Part #	Tire Size	Service Description / Ply Rating	Side wall	Overall Diameter (in)	Section Width (in)	Rim Width (in)	Tread Depth (in)	Max Load (lbs)	Max PSI
TP39155400	205/70R14	95T	OWL	25.4	8.4	6.0	10/32	1521	36
TP26052000	215/70R14	96H	BSW	25.9	8.7	6.5	11/32	1565	36
TP09590200	135/70R15	70T	BSW	22.6	5.4	4.0	10/32	739	36
TP18294600	145/65R15	72T	BSW	22.4	5.7	4.5	9/32	783	44
TP37299000	155/60R15	74T	BSW	22.3	6.1	4.5	10/32	827	44
TP37300000	165/55R15	75V	BSW	22.2	6.5	5.0	10/32	853	44
TP37320000	165/65R15	81T	BSW	23.5	6.7	5.0	10/32	1019	44
TP18248000	175/55R15	77T	BSW	22.7	6.9	5.5	10/32	908	44
TP18283000	175/60R15	81H	BSW	23.3	6.9	5.0	10/32	1019	44
TP18283100	175/60R15	81V	BSW	23.3	6.9	5.0	10/32	1019	44
TP18320000	175/65R15	84T	BSW	24.1	7.0	5.0	10/32	1102	44
TP18255000	185/55R15	82V	BSW	23.1	7.6	6.0	10/32	1047	44
TP00419100	185/60R15	88H XL	BSW	23.7	7.3	5.5	10/32	1235	44
TP18305000	185/65R15	88H	BSW	24.4	7.3	5.5	10/32	1235	36
TP23854200	195/55R15	85V	BSW	23.5	7.7	6.0	10/32	1135	44
TP38005200	195/60R15	88H	BSW	24.2	7.8	6.0	10/32	1235	44
TP38005500	195/60R15	88V	BSW	24.2	8.0	6.0	10/32	1235	44
TP00479600	195/65R15	91T	OWL	25.0	8.0	6.0	10/32	1356	44
TP23975200	195/65R15	91H	BSW	25.0	8.0	6.0	10/32	1356	36
TP23975400	195/65R15	91V	BSW	25.0	8.0	6.0	10/32	1356	36
TP23869000	205/55R15	88V	BSW	23.9	8.3	6.5	10/32	1235	44
TP38059400	205/60R15	91H	BSW	24.8	8.2	6.0	10/32	1356	44
TP38059000	205/60R15	91V	BSW	24.8	8.2	6.0	10/32	1356	44
TP15785000	205/65R15	95H	BSW	25.5	8.2	6.0	10/32	1521	44
TP15784400	205/65R15	95V	BSW	25.5	8.3	6.0	10/32	1521	44
TP39202600	205/70R15	96H	BSW	26.3	8.3	6.0	10/32	1565	36
TP18457800	215/60R15	94V	BSW	25.2	8.7	6.5	10/32	1477	44
TP18457600	215/60R15	94H	BSW	25.2	8.8	6.5	10/32	1477	44
TP39407800	215/65R15	96V	BSW	26.0	8.7	6.5	10/32	1565	44
TP39407600	215/65R15	96H	BSW	26.1	8.7	6.5	10/32	1565	36
TP26071200	215/70R15	98H	BSW	26.9	8.8	6.5	11/32	1653	36
TP39425000	225/60R15	96V	BSW	25.6	8.9	6.5	10/32	1565	44
TP00297100	195/55R16	87V	BSW	24.4	7.9	6.0	10/32	1201	44
TP39703000	205/55R16	91V	BSW	25.0	8.3	6.5	10/32	1356	44
TP40947000	205/60R16	92V	BSW	25.8	8.1	6.0	10/32	1389	44
TP40946600	205/60R16	92H	BSW	25.8	8.2	6.0	10/32	1389	44
TP40947200	205/60R16	96V XL	BSW	25.8	8.2	6.0	10/32	1565	50
TP40969200	205/65R16	95H	BSW	26.6	8.1	6.0	10/32	1521	44
TP40907000	215/55R16	93V	BSW	25.2	8.9	7.0	10/32	1433	44
TP40961000	215/60R16	95V	BSW	26.1	8.7	6.5	10/32	1521	44
TP40961800	215/60R16	99H XL	BSW	26.1	8.5	6.5	10/32	1709	50
TP40980000	215/65R16	98H	BSW	27.1	8.7	6.5	10/32	1653	36
TP40980200	215/65R16	98V	BSW	27.1	8.7	6.5	10/32	1653	44
TP40916000	225/55R16	95V	BSW	25.8	9.1	7.0	10/32	1521	44
TP40998000	225/60R16	98H	BSW	26.7	8.9	6.5	10/32	1653	44
TP40997000	225/60R16	98V	BSW	26.7	8.9	6.5	10/32	1653	44
TP41008800	235/60R16	100H	BSW	27.1	9.4	7.0	11/32	1764	44
TP41008600	235/60R16	100V	BSW	27.1	9.4	7.0	11/32	1764	44
TP42402100	215/55R17	94V	BSW	26.4	8.8	7.0	10/32	1477	44
TP42403600	225/55R17	101H	BSW	26.8	9.3	7.0	10/32	1819	50
TP00671100	P235/55R17	103V XL	BSW	27.2	9.4	7.5	11/32	1929	44

BSW - Black Sidewall

OWL - Outline White Letter

OBL - Outline Black Letter

XL - Extra Load

Sizes may be limited by market.

- All-Season High Performance tire designed for sport touring vehicles
- Non-directional tread pattern designed to offer excellent all-season traction
- Six circumferential grooves offer superior hydroplaning resistance
- Overall construction designed to maximize handling precision and driver confidence
- Jointless spiral-wound cap ply maximizes ride refinement and durability
- M&S All-season rated
- UTQG 320 A A



Part #	Tire Size	Service Description /Ply Rating	Side wall	Overall Diameter (in)	Section Width (in)	Rim Width (in)	Tread Depth (in)	Max Load (lbs)	Max PSI
TP23909000	205/65R14	91H	BSW	24.5	8.3	6.0	10/32	1356	36
TP18252000	185/55R15	81V	BSW	22.9	7.4	6.0	10/32	1019	44
TP23842800	195/50R15	82H	BSW	22.7	7.8	6.0	10/32	1047	44
TP23842500	195/50R15	82V	BSW	22.8	7.8	6.0	10/32	1047	44
TP23851200	195/55R15	85V	BSW	23.4	7.8	6.0	10/32	1135	44
TP39630000	P205/50R16	87V	BSW	24.2	8.3	6.5	10/32	1201	44
TP40900700	205/55R16	91V	BSW	24.8	8.4	6.5	10/32	1356	44
TP40907600	215/55R16	93V	BSW	25.2	8.8	7.0	10/32	1433	44
TP40964200	215/60R16	99V XL	BSW	26.1	8.7	6.5	10/32	1709	50
TP40980800	215/65R16	98H	BSW	26.9	8.6	6.5	10/32	1653	44
TP40994400	225/60R16	98V	BSW	26.6	9.0	6.5	10/32	1653	44
TP39640000	P245/50R16	97V	BSW	25.6	9.9	7.5	10/32	1609	44
TP42502900	P205/40R17	80V	BSW	23.6	8.3	7.5	10/32	992	44
TP41990000	P215/45R17	87V	BSW	24.6	8.3	7.0	10/32	1201	44
TP42400800	215/50R17	91V	BSW	25.6	8.7	7.0	10/32	1356	44
TP42405800	225/55R17	101V XL	BSW	26.9	9.0	7.0	10/32	1819	50
TP42002000	P235/45R17	93V	BSW	25.3	9.3	8.0	10/32	1433	44
TP42012000	P245/45R17	95V	BSW	25.5	9.5	8.0	10/32	1521	44
TP42022000	P255/45R17	98V	BSW	26.2	10.0	8.5	11/32	1653	44



- All-Season touring tire designed for premium touring vehicles
- Non-directional tread pattern designed to minimize pattern noise
- Specially formulated compound optimized for long wear
- Four high-void circumferential grooves offer excellent hydroplaning resistance
- Overall construction design focuses on maximizing ride refinement
- Jointless spiral-wound cap ply maximizes ride refinement and durability
- M&S All-season rated
- UTQG 720 A A T – speed rating

Part #	Tire Size	Service Description /Ply Rating	Side wall	Overall Diameter (in)	Section Width (in)	Rim Width (in)	Tread Depth (in)	Max Load (lbs)	Max PSI
TP20564000	P175/70R13	82T	BSW	22.7	6.8	5.0	11/32	1047	44
TP23129200	P185/70R13	86T	BSW	23.2	7.5	5.5	11/32	1168	44
TP17644200	P185/65R14	86T	BSW	23.5	7.4	5.5	11/32	1168	44
TP23614000	P185/70R14	88T	BSW	24.3	7.4	5.5	11/32	1235	44
TP18207000	P195/60R14	86T	BSW	23.2	7.9	6.0	11/32	1168	44
TP25610000	P195/70R14	91T	BSW	24.8	7.8	6.0	11/32	1356	44
TP39201800	P205/70R14	95T	BSW	25.4	8.2	6.0	11/32	1521	44
TP38008200	P195/60R15	88T	BSW	24.2	7.8	6.0	11/32	1235	44
TP23996200	P195/65R15	91T	BSW	25.0	7.9	6.0	11/32	1356	44
TP38062000	P205/60R15	91T	BSW	24.7	8.3	6.0	11/32	1356	44
TP15786200	P205/65R15	94T	BSW	25.5	8.2	6.0	11/32	1477	44
TP39207200	P205/70R15	96T	BSW	26.3	8.1	6.0	11/32	1565	44
TP39207300	P205/70R15	96T	RWW	26.3	8.2	6.0	11/32	1565	44
TP18456200	P215/60R15	94T	BSW	25.2	8.6	6.5	11/32	1477	44
TP26066200	P215/70R15	98T	BSW	26.9	8.6	6.5	11/32	1653	44
TP26066400	P215/70R15	98T	RWW	26.9	8.6	6.5	11/32	1653	44
TP40902300	P205/55R16	91V	BSW	24.9	8.4	6.5	12/32	1356	44
TP40906200	P215/60R16	95T	BSW	26.1	8.7	6.5	11/32	1521	44
TP41005900	P225/60R16	98T	BSW	26.8	8.9	6.5	11/32	1653	44
TP42410200	P215/60R17	96T	BSW	27.2	8.7	6.5	11/32	1565	44
TP42409000	P215/65R17	99T	BSW	28.0	8.7	6.5	11/32	1709	44
TP41434000	P225/60R17	99T	BSW	27.6	9.0	6.5	11/32	1709	44
TP43024400	P225/60R18	100V	BSW	28.6	9.0	6.5	12/32	1764	44

BSW - Black Sidewall

OWL - Outline White Letter

RWW - Raised Whitewall

XL - Extra Load

Sizes may be limited by market.